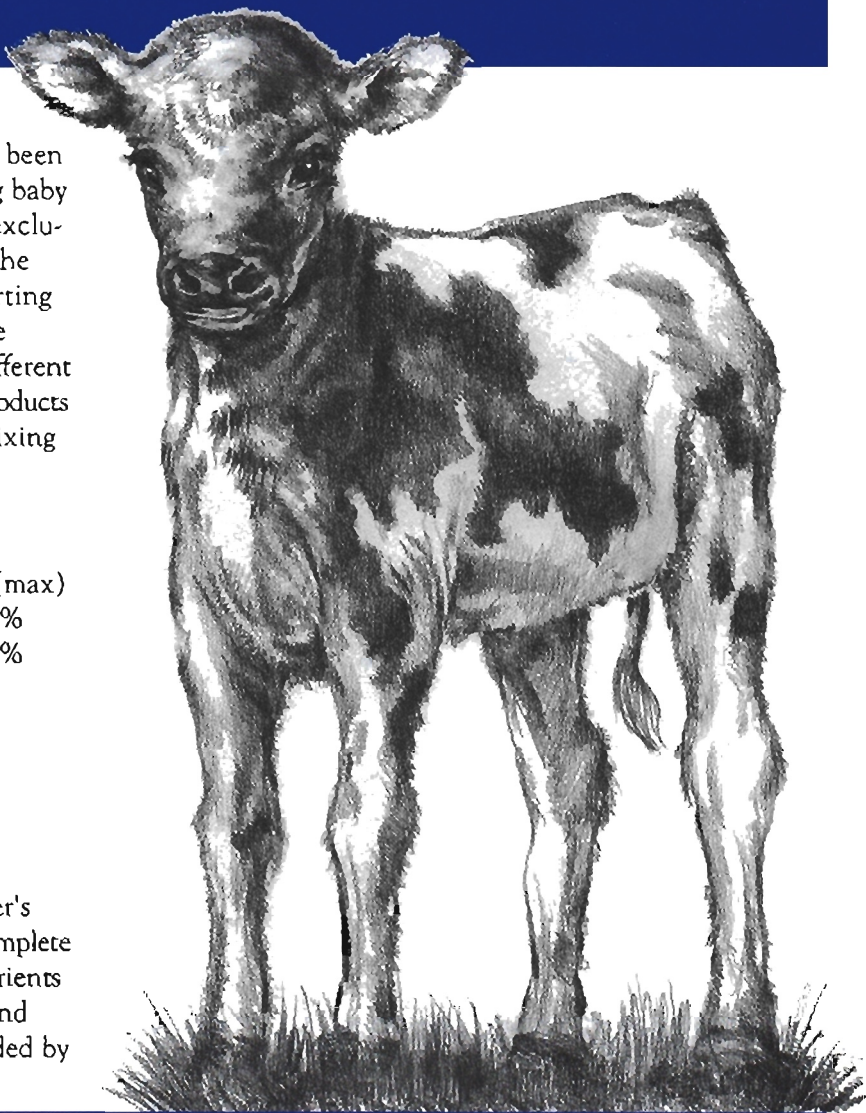


ELITE CALF MILK REPLACERS

All Milk Protein Formula



ESMILCO ELITE CALF MILK REPLACERS have been formulated to maximize performance in fast growing baby calves. The proteins in these formulas are derived exclusively from milk products and are easily utilized by the calf. These products are an excellent choice for starting calves right after colostrum. Various levels of fat are available to permit flexibility in energy density for different environmental and management conditions. These products are instantized to provide easy, fast and complete mixing qualities.

NUTRIENT LEVEL GUARANTEES

PROTEIN (min.)	FAT (min.)	FIBER (max)
20-22%	20%	0.15%
18-20%	15-18%	0.15%

VITAMIN AND MINERAL LEVELS

VITAMIN A	30,000 IU/LB
VITAMIN D3	4,000 IU/LB
VITAMIN E	150 IU/LB

Vitamin levels may be customized to fit the customer's specific needs. The ELITE milk replacers contain a complete vitamin and mineral premix with all of the micro nutrients necessary for optimum calf performance. Vitamin and mineral levels meet or exceed the levels recommended by the National Research Council.

ELITE CALF MILK REPLACERS

FEATURES

Milk protein

Edible fat blend

Instantized

Proper vitamin and mineral fortification

ADVANTAGES

Maximum digestibility

Lower incidence of nutritional scours

Milk stays in solution

Quality image

Meets calves' energy requirement

Mixes easily

Meets nutritional needs

RESULTS

Optimized growth rate

Easier to start calves

Increased sales

Optimized performance

Time savings

Better calf performance